

Ride safely

- A helmet (mandatory for under 12s!)
- A fluorescent waistcoat
- Lighting
- Reflectors
- A horn

And, to be covered in case of an accident, your basic liability is sufficient, even with an e-bike.



A question about bicycles ?
Information centers and self-repair workshops :
• **CASA du Vélo**, 4 traverse du Barri, Sophia Antipolis

**LESS THAN 10KM,
ALL BY ELECTRIC BIKE
À ASSISTANCE ÉLECTRIQUE**



**Rent an e-bike
for 3 months**
CASA envélo !

PURCHASE A BIKE
Up to €500 in purchase assistance and 40% off the bike's price.
Subject to means testing

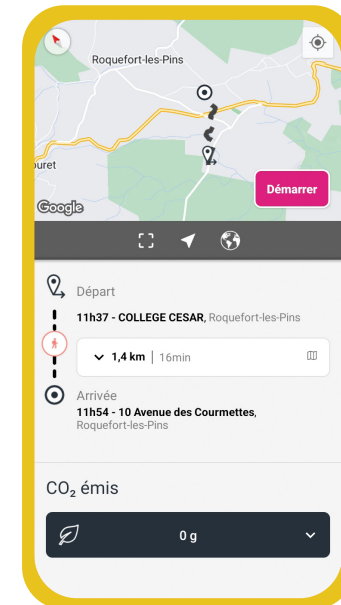
€
Home-to-Work Commute by Bike ?
Remember to request your
**SUSTAINABLE
MOBILITY PACKAGE**
from your employer. **Up to €800/year !**
For more information : ecologie.gouv.fr



**ALL THE
INFORMATION
ABOUT BIKES !**

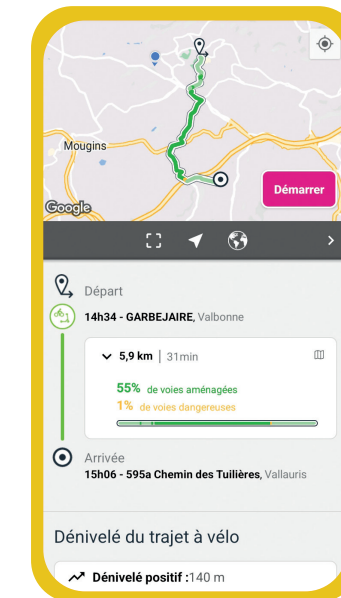


**FIND THE BEST
ROUTE FOR WALKING...OR CYCLING !**

**1km is LESS
than 15MIN !**

ENVIBUS
CAP AZUR
App



Available on
Apple and Android
App Store
Google Play



**LESS THAN 2KM,
ALL ON FOOT !**
WALKING IS NEVER A WASTE OF TIME



Sophia Antipolis Urban Community

Daily Commuting Guide

Don't throw on the public highway - © CASA 2024, Adobe Stock

✉ mobilite@agglo-casa.fr www.agglo-sophiaantipolis.fr
✉ @CasaOfficiel [f CommunauteAgglomerationSophiaAntipolis](https://www.facebook.com/CommunauteAgglomerationSophiaAntipolis)

Daily Commuting Guide



Today, **70% of daily journeys are made by private car, even for very short distances.** The **Sophia Antipolis Conurbation Community** has been working for **20 years** to provide **environmentally friendly travel solutions** in response to this situation and to meet the challenges of everyday mobility.

With the **Envibus** network, we are offering an **attractive fare structure** that encourages use, combined with an **efficient public transport service.** **Innovation** is in our **DNA**, so we offer users essential **applications with intelligent route calculation to promote intermodality.**

Finally, we also focus on **promoting cycling**, because **cycling** is a **solution for the future**, both **environmentally and economically.**

With this guide, we invite you to discover practical travel solutions that you can adopt on a daily basis to protect both the environment and your purchasing power.



Jean LEONETTI

President of the Sophia Antipolis Urban Conurbation Community



TRAVEL MADE EASILY YOUR SMART ROUTE PLANNER !

Public transport

- Combined for the most efficient journey on Envibus, Palmbus, Sillages, ZOU! + TER train
- Best travel times
- Exact stop locations
- Real-time next departures
- Timetables



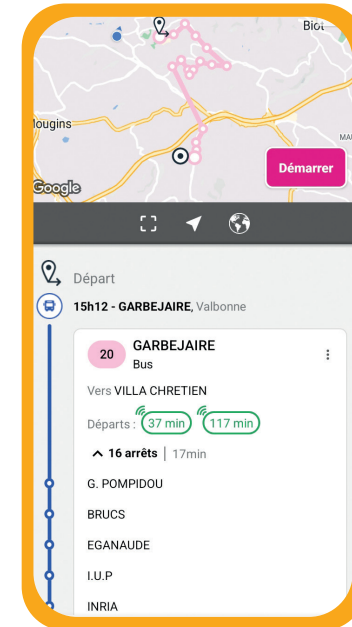
"Near me" option

- Find on the same map :
- Nearby stops and next departures
- Bike parking
- Walking route to get there



Bike

- Routes with a percentage of secured paths
- Travel time for bike / EVB
- Bike parking
- Audio guidance
- Slope and elevation



ENVIBUS CAP AZUR



Available on
Apple and Android



TAKE THE @nvibus NETWORK !

Easy ticket ! 7/7 and 24/24

- Envibus ticket app**
Purchase of transport tickets via **smartphone** : single ticket, day pass, 10-trip pass, shuttle pass, 7-day pass, monthly subscription and annual subscription
- SMS Ticket**
93006 + Bus line number (ticket valid **immediately** for **1 hour**). Payment will be added to your next mobile bill
- E-shop**
Reload monthly and annual season tickets online : **envibus.fr**
- Ticket vending machine**
Purchase of transport tickets and renewal of subscriptions



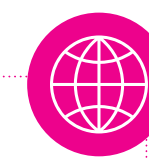
A bus for everyone !

- The urban network**
1200 stops and over 25 routes for your travels along the coast and to Sophia Antipolis
- The school Network**
Over 65 routes serving schools, middle schools and high schools
Reducing pollution near educational institutions
- Icilà on-demand transport**
Smart transport in the middle and high country
Reservations 24/7 via envibus.fr, the Icilà app, or by phone at +33 4 92 19 76 33, Monday to Friday from 6:30 AM to 7:00 PM, and Saturday from 9:00 AM to 12:00 PM and 2:00 PM to 5:30 PM



Stay up-to-date

- Traffic Alerts**
Real-time information : disruptions, detours, schedule changes, etc. To subscribe : **envibus.fr** (SMS or email).
- Facebook & X accounts**
Facebook @Envibus and X @EnvibusOfficiel



Save money !

ON ENVIBUS
€90/year ou €12/month
Junior Pass (under 18) : €60
Senior Pass (75+) : free
School Pass : €5



Lines A and B, Antibes - Sophia Antipolis are free with the Shuttle Pass !

PASS SUDAZUR
7 zones to choose from

A single pass for all your modes of transport :
bus, tram, train sur le 06 area. Choose your zone !



50% OF THE MINIMUM SUBSCRIPTION
cost covered by your employer.

A stress-free journey is a validated ticket !



@nvibus

The public transport network of the
Sophia Antipolis Urban Community

www.envibus.fr



POLLUTION, STRIKES, ROADWORKS, TRAFFIC... CONSIDER CARPOOLING !



Available on
Apple and Android



Home-to-Work Commutes
Remember to request the payment of your
SUSTAINABLE MOBILITY PACKAGE
from your employer. **Up to €800/year !**
For more information : ecologie.gouv.fr/covoiturage

